



Our School Plan

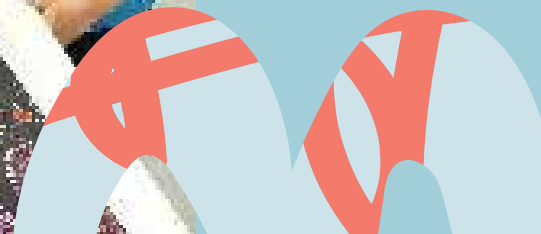
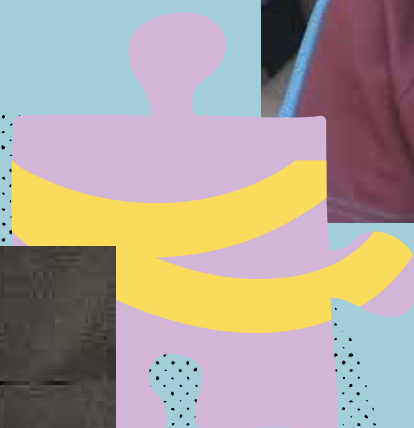
2022-2024



Acknowledgement of Country

Ngalla Bayswater Primary School kaatanginy baalapa Noongar Boodja baaranginy, Wadjuk moort Noongar moort, boordiar's koorra koorra, boordiar's ye yay ba boordiar's boordawyn wah.

Bayswater Primary School acknowledges the Traditional Custodians of the land, the Whadjuk people of the Noongar Nation, and pays its respects to elders past, present and emerging.





Contents

Our school	2
Our values.....	3
Our vision	3
Our self-assessment process.....	4
Successful students.....	5
Quality teaching.....	6
Learning environment	7
Resources	8
Leadership.....	9
Relationships	10



Our school

Ringing True since 1894, Bayswater Primary School has a long history of providing quality public education and is strongly supported by the local community.

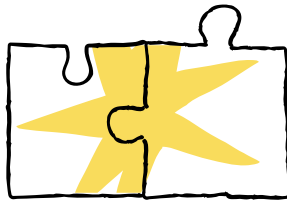
We have a rich multicultural population and celebrate the diversity in our community. We maintain a focus on fostering a family friendly atmosphere where parent engagement is valued. We work hard to develop and sustain productive partnerships with our families and the wider community.

At Bayswater Primary School, we ensure that every child matters every day and we set high expectations of success for all.

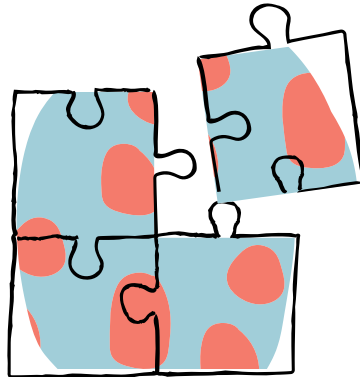
*We want students to be happy,
healthy and supported to
achieve to their potential.*



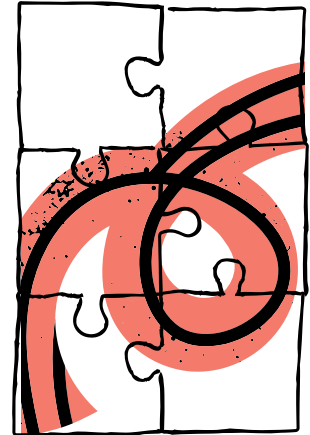
Our vision



Build

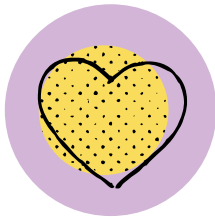


Belong

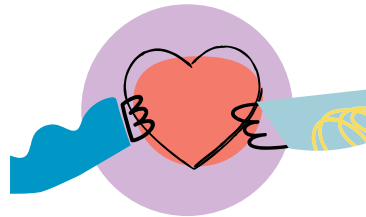


Become

Our values



**Respect
for self**



**Respect
for others**



**Respect
for learning**



**Respect
for the
environment**

Our self-assessment process

Successful students are at the core of our school improvement, with both academic and non-academic standards the central focus.

Bayswater Primary School promotes initiatives linked to the *Department of Education Strategic Plan 2020 - 2023* and *Classroom First Strategy*. We structure our self-assessment and School Plan targets and strategies according to the *School Improvement and Accountability Framework*.

Teaching, Learning Environment, Leadership, Resources and Relationships are the five key areas of focus that are monitored to determine our effectiveness in relation to student achievement.

Our school improvement cycle is an ongoing process encompassing three components: we assess data, plan for improvement and act to implement these plans.



1 Successful students

At Bayswater Primary School we ensure every student is supported to develop academically, socially, and emotionally. We provide a rigorous curriculum focused on explicit, differentiated teaching to ensure all students achieve their best.

2024 targets and goals



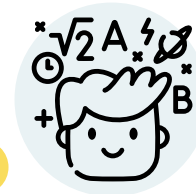
1.1

The percentage of students in Years 3 and 5 in top and bottom bands in NAPLAN Reading, Writing and Numeracy will be better than like schools.



1.2

The Year 3 and 5 means in NAPLAN Reading, Writing, Spelling and Numeracy will be above like schools.



1.3

The average test scores in PAT Reading and Mathematics for students in Years 1-6 will be maintained above the test average by 5% or more.

Strategies

- Scope and Sequence documents outline the core consistent curriculum that all students are taught.
- Data is analysed to monitor student progress, inform planning and support targeted teaching.
- Whole school evidence based programs and approaches are consistently implemented in every class. (Science of Reading, Seven Steps to Writing, PRIME Maths and Sounds Write)
- An agreed explicit teaching model is consolidated in Literacy and Numeracy blocks.
- Learning is differentiated to accommodate extension and support strategies in teaching and learning programs.
- Students at Educational Risk are identified and supported through individualised learning goals and targeted intervention strategies for literacy and numeracy



2 Quality teaching

At Bayswater Primary School we have high expectations for the success of all students. They are supported through data informed, high quality teaching practice using whole school, collaborative approaches.

2024 targets and goals



2.1

All teachers are implementing the Bayswater Primary School explicit teaching model for Literacy and Numeracy instruction.



2.2

Staff survey results for *"I receive useful feedback about my work at this school"* improves from 72% to 85%.



2.3

Staff will improve the rating on National School Improvement Tool for *'Analysis and Discussion of Data'* from Medium to High.

Strategies

- Document and outline the whole school explicit instructional approach to Literacy, Numeracy and Specialist areas.
- A consistent data analysis and review schedule is implemented for tracking student progress and informing classroom practice.
- Staff work collaboratively in Year Level and Phase Teams to analyse data, plan learning programs and moderate teacher judgement.
- Upskill staff pedagogical knowledge through professional learning in evidence-based teaching practice.
- Staff share best practice to upskill others and receive constructive feedback on their performance through peer observation and coaching.



3 Learning environment

At Bayswater Primary School we provide a welcoming, positive, and safe learning environment where every student is supported in their learning and wellbeing.

2024 targets and goals



3.1

The overall mean for attendance will be higher than like schools.



3.2

The overall score for Social and Emotional Wellbeing in the ACER survey will be above the 'All School' mean.

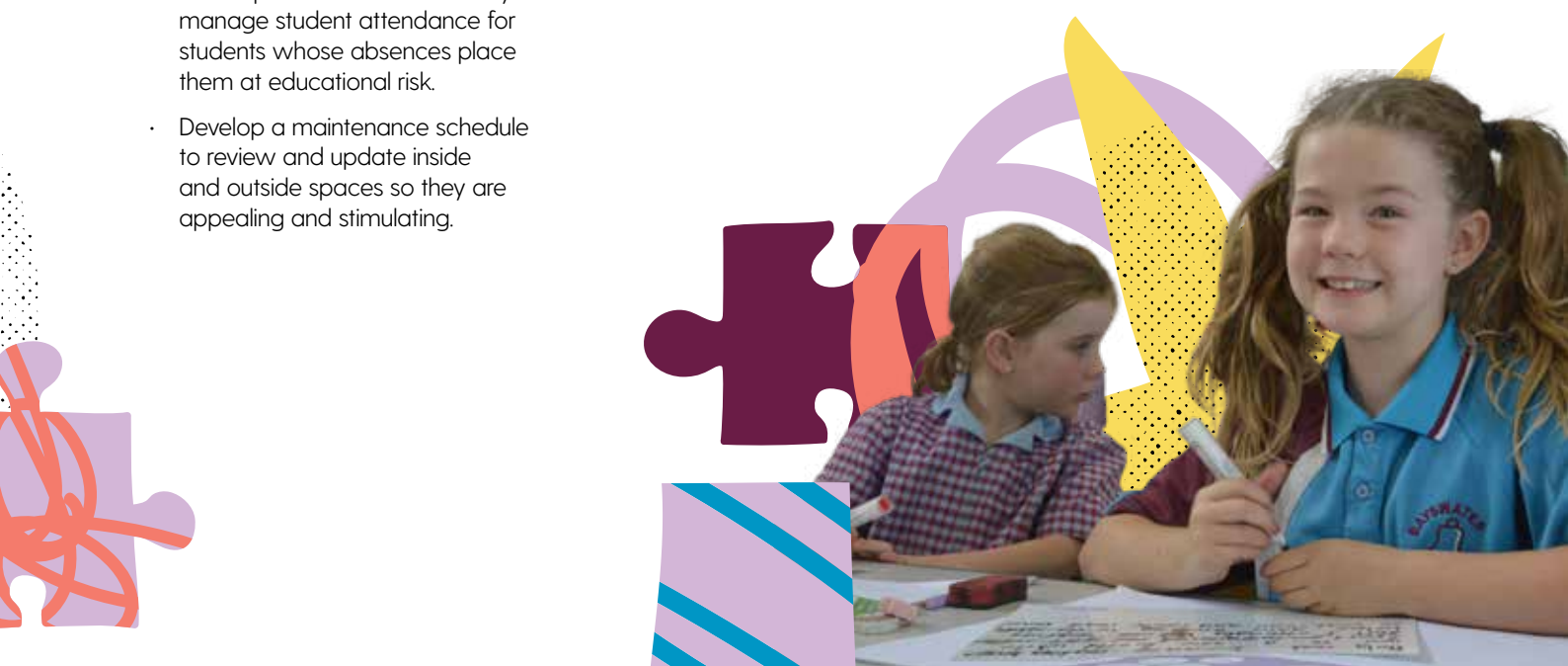


3.3

More than 80% of students will achieve 'consistently' for 'Showing confidence in making positive decisions and choices' for Attitude, Behaviour and Effort on Semester Reports.

Strategies

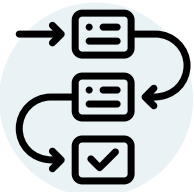
- Review the Positive Behaviour Plan and communicate to all members of the school community their role and responsibilities in implementing the plan consistently.
- Implement targeted strategies and school procedures to effectively manage student attendance for students whose absences place them at educational risk.
- Develop a maintenance schedule to review and update inside and outside spaces so they are appealing and stimulating.
- Use Social Emotional Wellbeing (SEW) assessment to evaluate and monitor student well-being and implement whole school SEW Plan supported through the provision of resources and personnel.



4 Resources

At Bayswater Primary School we strategically manage school resources to maximise learning outcomes for all students through effective, physical and human resource management.

2024 targets and goals



4.1

A Master Plan is developed to meet future needs of the school.



4.2

Supplementary funding through partnerships, grants and hire of facilities has increased.



4.3

Overall agreement by staff and parents for 'This school is well maintained' in the National Schools Opinion Survey is higher than 90%.

Strategies

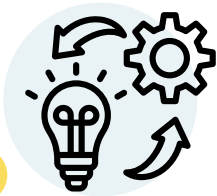



- Develop and implement a maintenance plan for school facilities and equipment.
- Develop a framework to leverage opportunities for external partnerships.
- School Board Sub-committee to consult with Department of Education to develop a Master Plan for future needs of the school.
- Annual operational planning links human, physical and financial resourcing to school priority areas and identified student needs.
- Increase capacity of students to access ICT and digital technologies.



5 Leadership

At Bayswater Primary School we develop staff capacity by establishing career development opportunities and a clearly defined distributed leadership model.

2024 targets and goals

 <p>5.1</p> <p>Staff assess the school as High for 'An explicit improvement agenda' on the National School Improvement Tool.</p>	 <p>5.2</p> <p>Staff rating on School Culture Survey for Performance Development Culture: Feedback increases from an average of 3.2 to 4.0.</p>	 <p>5.3</p> <p>Overall agreement for 'This school is well led' in the National Schools Opinion Survey is higher than 95%.</p>	 <p>5.4</p> <p>Curriculum leadership positions are advertised and filled each year.</p>
---	--	---	--

Strategies


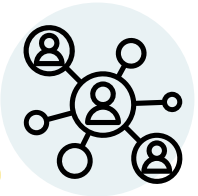

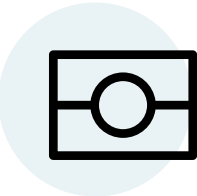
- Develop a distributed leadership model with clear roles, responsibilities and procedures.
- Provide time and resources for Learning Area Leaders to develop programs.
- Create opportunities that allow for collaboration between staff.
- Implement processes for peer coaching and mentoring of staff in classroom teaching across all learning areas.
- Implement the Future Leaders Framework to identify and build leadership capacity



6 Relationships

At Bayswater Primary School we support open and collaborative communication with staff, students, parents and the wider community. We actively promote and maintain a positive school culture that is respectful and inclusive.

2024 targets and goals

 <p>6.1</p> <p>Overall agreement for 'This school works with me to support my child to learn.' in the National Schools Opinion Parent Survey is higher than 92%.</p>	 <p>6.2</p> <p>Staff rating on National School Improvement Tool for School 'Community Partnerships' increases from Medium to High.</p>	 <p>6.3</p> <p>Self-assessment on the School Board Survey demonstrates improved ratings across all areas of governance.</p>	 <p>6.4</p> <p>School assessment of the Aboriginal Cultural Standards Framework indicates progress in each standard towards increased cultural responsiveness.</p>
---	---	---	---

Strategies

- Seek feedback from parents, staff and students at least once per year on progress against the Business Plan, school initiatives, and general levels of satisfaction and act on feedback.
- Develop a policy for two-way communication between the school and families using multiple modes of communication.
- Establish, maintain or extend partnerships with service providers, community organisations, local government, businesses, and educational institutions for the benefit of the school, students and the broader learning programs.
- Implement strategies to improve cultural responsiveness using the Aboriginal Cultural Standards Framework Operational Plan.
- Recognise and promote staff and student achievement

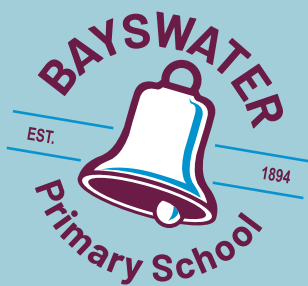


*" We provide a rigorous curriculum
focused on explicit, differentiated
teaching to ensure all students
achieve their best "*









Bayswater Primary School

15 Murray Street, Bayswater WA 6053

(08) 9462 6600

bayswaterps.wa.edu.au

bayswater.ps@education.wa.edu.au

facebook.com/bayswaterprimaryschool